



Roxtec RS EMC-tætning med SL RS

EMC-tætning med sleeve for svejsning til et enkelt kabel eller rør.

Roxtec RS EMC med SL RS er en tætning, der sikrer elektromagnetisk kompatibilitet. Tætningen har en metal sleeve og er beregnet til enkelt kabler eller rør. Tætningen har to halvdele med aftagelige lag, så den kan tilpasses kabler og rør af forskellig størrelse. Man kan vælge mellem ES-versioner for elektromagnetisk afskærmning og PE-versioner, der beskytter mod elektrisk ledede forstyrrelser. Sleeve svejses til konstruktionen. Brug Roxtecs EC spændingstester til at få en indikation af den elektriske ydeevne for installationer udført med Roxtec BG™ eller ES.



- Gnaverbestandig
- Hurtig og nem at montere

Produktegenskaber



Brandklassificeret



Vandtæt



Gastæt



EMI-beskyttelse

Byggekonstruktion



Metal

Monteringstype



Svejsning

Normeringer og certifikater

Brand

- A-KLASSE i henhold til IMO 2010 FTP-kode
- H-KLASSE i henhold til IMO 2010 FTP-kode + HC-brandbelastningskurve
- Jetfire i henhold til ISO 22899-1 og OTI 95634

Tæthed

- Gas: 2,67 bar (katastrofe)
- Vand: 4 bar (katastrofe)

Understøtter

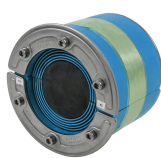
- Elektromagnetisk skærmning
- Potentialudligning

Data om tætningskomponenter

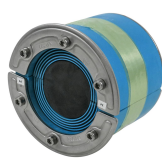
Tætningskomponenter



SL RS-sleeve



RS ES-tætning

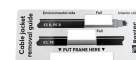


RS PE-tætning



Lubrikant

Tilbehør



tilbehør ES og BG

For mer information, besøg venligst [roxtec.com](https://www.roxtec.com).

The product information provided by Roxtec does not release the purchaser of the Roxtec system, or part thereof, from the obligation to independently determine the suitability of the products for the intended process, installation and/or use.

Roxtec gives no guarantee for the Roxtec system or any part thereof and assumes no liability for any loss or damage whatsoever, whether direct, indirect, consequential, loss of profit or otherwise, occurred or caused by the Roxtec systems or installations containing components not manufactured by an authorized manufacturer and/or occurred or caused by the use of the Roxtec system in a manner or for an application other than for which the Roxtec system was designed or intended.

Roxtec expressly excludes any implied warranties of merchantability and fitness for a particular purpose and all other express or implied representations and warranties provided by statute or common law. User determines suitability of the Roxtec system for intended use and assumes all risk and liability in connection therewith. In no event shall Roxtec be liable for indirect, consequential, punitive, special, exemplary or incidental damages or losses.

The Roxtec products are offered and sold in accordance with the conditions of the Roxtec General Terms of Sales. The latest version of the Roxtec General Terms of Sales can be downloaded from <https://www.roxtec.com/en/about-us/about-roxtec/general-terms-of-sales/>

We reserve the right to make changes to the product and technical information without further notice. Any errors in print or entry are no claims for indemnity. The content of this publication is the property of Roxtec International AB and is protected by copyright.

This document was generated on: 2024-04-17